



MONTHLY MEMBERSHIP PROGRESS REPORT

District 325B1

Results as of: 1/31/2015

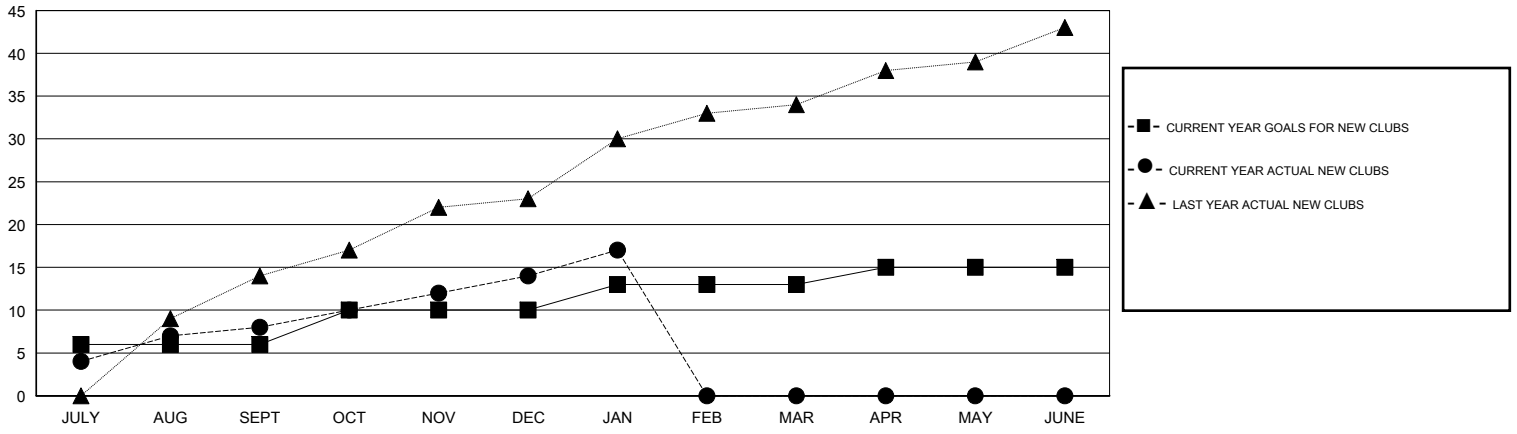
GMT: NAZMUL HAQUE

LOCATION NEPAL

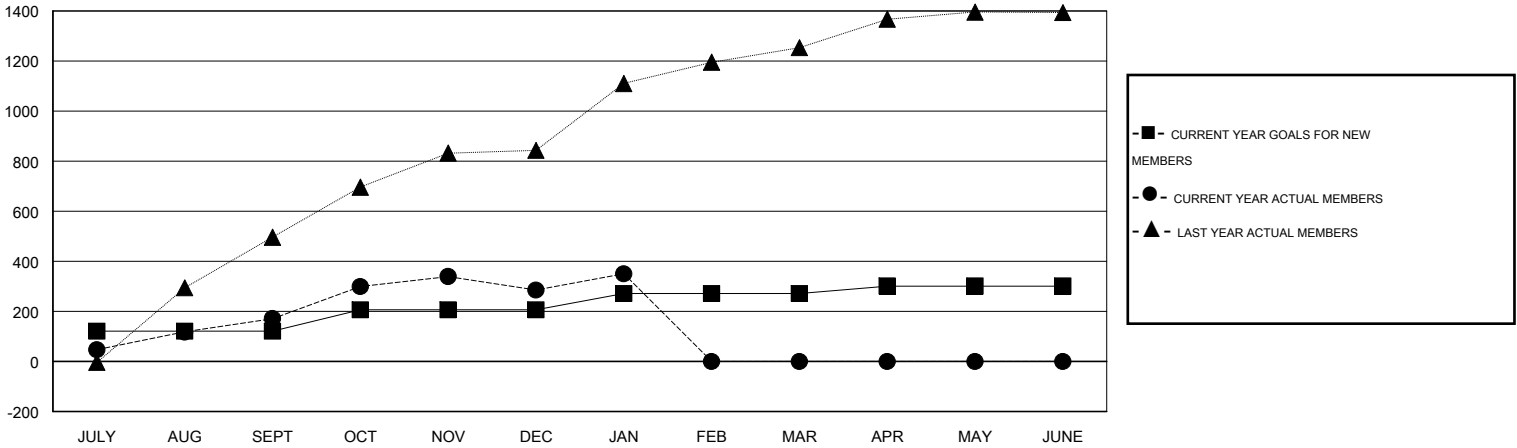
GMT CA 6

Clubs					Members				
RESULTS FOR 2014-2015					RESULTS FOR 2014-2015				
QUARTER	NEW CLUB GOAL	NEW CLUBS	DROPPED CLUBS	NET GAIN/LOSS	QUARTER	NEW MEMBER GOAL	CHARTER AND NEW MEMBERS ADDED	DROPPED MEMBERS	NET GAIN/LOSS
JULY/AUG/SEPT	6	8	0	8	JULY/AUG/SEPT	121	301	130	171
OCT/NOV/DEC	4	6	2	4	OCT/NOV/DEC	85	323	209	114
JAN/FEB/MAR	3	3	3	0	JAN/FEB/MAR	65	141	76	65
APR/MAY/JUNE	2	0	0	0	APR/MAY/JUNE	30	0	0	0

GOALS AND ACTUAL NEW CLUBS CUMULATIVE



GOALS AND ACTUAL MEMBERS CUMULATIVE



DROPPED CLUBS: 5	91 CLUBS OF 168 ADDED 1 OR MORE NEW MEMBERS	<u>GENDER DISTRIBUTION</u>			
<u>DROPPED MEMBERS</u>		MALE	3,988 (82.70%)		
DECEASED	1	FEMALE	834 (17.30%)		
CLUB CANCELLED	80	CLICK HERE FOR HEALTH ASSESSMENT DATA			
OTHER	334			FAMILY UNIT MEMBERS	2,447
TOTAL	415			HEAD OF HOUSEHOLD	903
		NON-HEAD OF HOUSEHOLD	1,544		